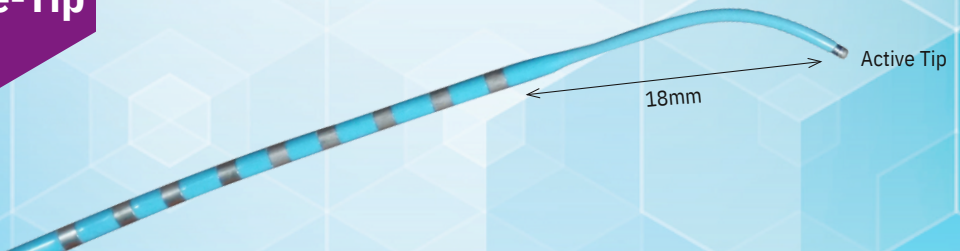


CS-Navigator Active Tip™ Diagnostic Catheters

**High Density Linear
 Mapping with Active-Tip
 Electrode**



CS NAVIGATOR - ACTIVE TIP KEY FEATURES



- > **Tight electrode spacing allows for precise signal mapping and location of arrhythmia origin**
- > **Active tip electrode provides bipolar signal from most distal anatomy**
- > **Optimal for mapping of LV Summit, septal perforators, middle cardiac vein, Vein of Marshall¹**
- > **Small diameter catheter body with 2F tip enhances placement into the smallest of CS vasculature**
- > **Unique catheter shaft provides improved pushability, ease of placement and additional catheter shaft support for difficult anatomy**
- > **Shaft material and advanced construction methods prevent softening over time - offering consistent handling characteristics and performance, even in the longest of cases**

CATHETER SPECIFICATIONS

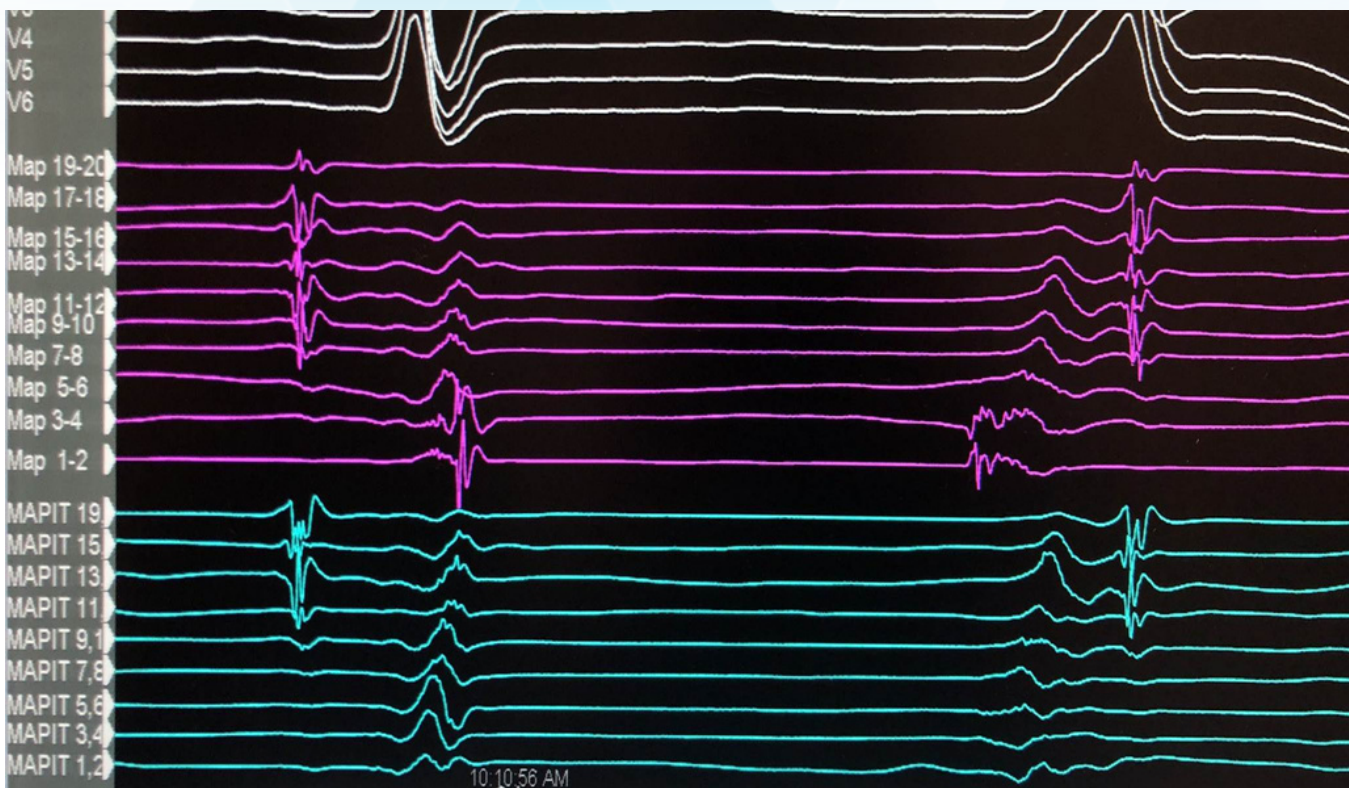
- > **French Size:** 4/3.3F/2F
- > **Active Tip Electrode:** .026" (.66mm)
- > **Length:** 120cm
- > **Electrodes:** 10 or 20
- > **Electrode Spacing:** 18-2-2-2mm,
18-2-5-2mm
- > **Curve Type:** S (straight)

CS NAVIGATOR ACTIVE-TIP DIAGNOSTIC CATHETERS

Active-Tip 4/3.3F/2F Decapolar Fixed Electrophysiology Catheter

Reference Number	Electrodes	Electrode Spacing (mm)	Ring Electrode (mm)	Active Tip Electrode	Curve	Usable Length (cm)
904222	10	18-2-2-2	1	.026" (.66mm)	Straight	120
904252	10	18-2-5-2	1	.026" (.66mm)	Straight	120

Connection Cable: Reference number 901957



Active-Tip 4/3.3F/2F Duo-Decapolar Fixed Curve Electrophysiology Catheter

Reference Number	Electrodes	Electrode Spacing (mm)	Ring Electrode (mm)	Active Tip Electrode	Curve	Usable Length (cm)
904220	20	18-2-2-2	1	.026" (.66mm)	Straight	120
904250	20	18-2-5-2	1	.026" (.66mm)	Straight	120

Connection Cable: Reference number 901957, 2 cables required

1. Roderick Tung, et al. Left ventricular summit arrhythmias article, J. Heart Rhythm 2020.07.021